



Aurora Fairway School



“ We give our students the right opportunities to make positive choices about their own futures. ”

A specialist day school located in St Ives, Cambridge, offering academic and therapeutic provision for students aged 11-16 with a range of complex learning needs including social, emotional and mental health needs, speech, language and communication difficulties and autism.

At The **Aurora** Group

We believe in giving people the opportunities they need to create and lead fulfilling, independent lives.

Established in 2015, we are now the UK's sixth largest provider of education, care and support services for children and young people with special educational needs and disabilities. Each of our schools, colleges and residential homes retains its own unique identity while embracing and embodying our group's core values:

- We are caring. We understand that your experience in mainstream care and education may have been a difficult one. We take seriously our responsibility for the children and young people in our care, and are committed to making your time with us as positive and fulfilling as possible.
- We are ambitious. We have high expectations of all our children and young people, regardless of what barriers they may have faced in the past. We encourage them to expect more for themselves, while challenging employers and communities to understand and value their diverse needs and attributes.
- We are collaborative. Everything we do, we do in partnership with you. We actively seek and listen to feedback from students, parents and staff, to find out what's working well, what we can do better, and how we can further develop all our services to benefit the people we work with.
- We are trusted. Our business is funded by ethical investors. They understand that sustainable growth is possible only when we hold ourselves to the highest standards, by delivering consistently top-quality services to every single person we work with.
- We are innovative. We begin planning for each young person's future the minute they walk through our doors. We tailor our approach to their unique needs, and are constantly looking for new opportunities to help them explore, enhance and employ their own skills, talents and abilities.

Caring

Ambitious

Collaborative

Trusted

Innovative

Welcome

Fairway is a warm and welcoming school which places student wellbeing and safety at the heart of our provision. Our building is a converted golf pavilion and we have adopted our vision of 'Driving Futures Together' from that sporting sentiment.

This means we want to give our students the drive and ambition to succeed and become the best version of themselves in:

- their education,
- their employment
- their independence in adulthood.

We realise this is a collaborative process and, that by working together, we will raise students' aspirations and achievements.

We have a highly skilled and specialist teaching, support and therapeutic team working with each young person to ensure their needs are fully met and that every achievement takes them closer to their potential in all aspects of their lives; educationally, socially and emotionally.

Julie Sadler
Headteacher, Aurora Fairway



About Our School

Aurora Fairway is based in St Ives, Cambridge. The school caters for students aged 11-16 with a range of needs including social, emotional and mental health needs and autism spectrum conditions. Fairway has an inclusive, welcoming learning environment in which all our students can develop and thrive. We put our students' needs first because we know that, once we understand who they are and their individual learning styles, we can support them to achieve their full potential.

Our Curriculum

The overall purpose of our curriculum is to prepare students for life beyond school, through a positive and supportive framework that helps to develop:

- Confident individuals who lead safe, healthy and fulfilling lives in which they can communicate and interact well with others.
- Successful learners who enjoy school, make great progress and achieve a range of qualifications.
- Responsible citizens who are ready to take their place in society.

We offer a broad and balanced curriculum with a flexible timetable designed around each student to recognise individual abilities, interests and needs.

Our learning programmes are based on the National Curriculum, with opportunities to develop functional and independent 'skills for life' alongside academic subjects.

We place particular focus on safeguarding, which is promoted through PSHE, RSE and Citizenship and provide opportunities for students to increase their confidence and awareness through developing good decision-making skills.

Further school provision

The curriculum will also include several enrichment subjects to help meet the unique needs of the students. The intention here is to help decrease anxiety, improve social communication skills, raise levels of engagement and provide opportunities to develop personal interests. Enrichment subjects will include Multi-Media, Life and Living Skills and a range of weekly, off-site physical activities that students can choose at the beginning of term, that will include boxing, horse-riding and swimming.

Throughout their time with us, students can achieve a range of qualifications, GCSEs or equivalent vocational certificates, and benefit from a range of high-quality opportunities to work with local employers and participate in industry related activities.

We help each student to identify and develop their unique skills, talents and abilities, so that they can choose a post-16 route that works for them – whether that's further education, vocational training or employment.



Supporting potential

We encourage all our students to see themselves as competent learners with a 'can do' attitude. To achieve this, we offer several externally accredited programmes and courses to accommodate different abilities and levels of attainments. These include GCSEs, Functional Skills, ASDAN, Life and Living Skills and BTech. Our curriculum also supports students to develop a range of coping skills, build resilience and become more consistently regulated by applying learnt strategies to situations that cause stress and anxiety. With this awareness, students' access to learning is increased, leading to greater independence and better academic outcomes.

Providing opportunities

Our collective vision of 'Driving Futures Together' reflects an ethos of teamwork and aspiring to achieve great things. We want to give our students the drive and ambition to succeed and become the best version of themselves in their:

- education
- employment
- independence in adulthood

We believe this is a collaborative process and, by working together with students, their families and the wider staff team, we can raise our young peoples' aspirations and achievements.

Additional therapeutic support for students

We offer a range of clinical and therapeutic interventions at Aurora Fairway, designed to help our students overcome barriers to participation in education.

These are delivered by highly-skilled staff in a class setting, using an integrated therapeutic model. This enables us to offer flexible and responsive support whenever and wherever its needed most and our staff team follows a single, student-centred plan.

We monitor and adapt our approach for each student through a personalised annual review process, which puts the student at the centre and involves a range of academic and therapeutic staff.

Your experience with us

We believe that one size does not fit all, so our approach to learning and teaching is to focus on the individual needs of every student. Each student benefits from a tailored curriculum based on their initial assessment, previous academic and personal outcomes and long-term learning targets. The curriculum fits around the young person, not the other way around.

Building trust

We take a positive approach to behaviour support at Aurora Fairway. We believe that managing behaviour is first and foremost about relationships and trust. While violence or aggression are not acceptable, they are often understandable – negative behaviour can often be a display of emotional distress and we will aim to manage it with compassion, whilst ensuring everyone is kept safe

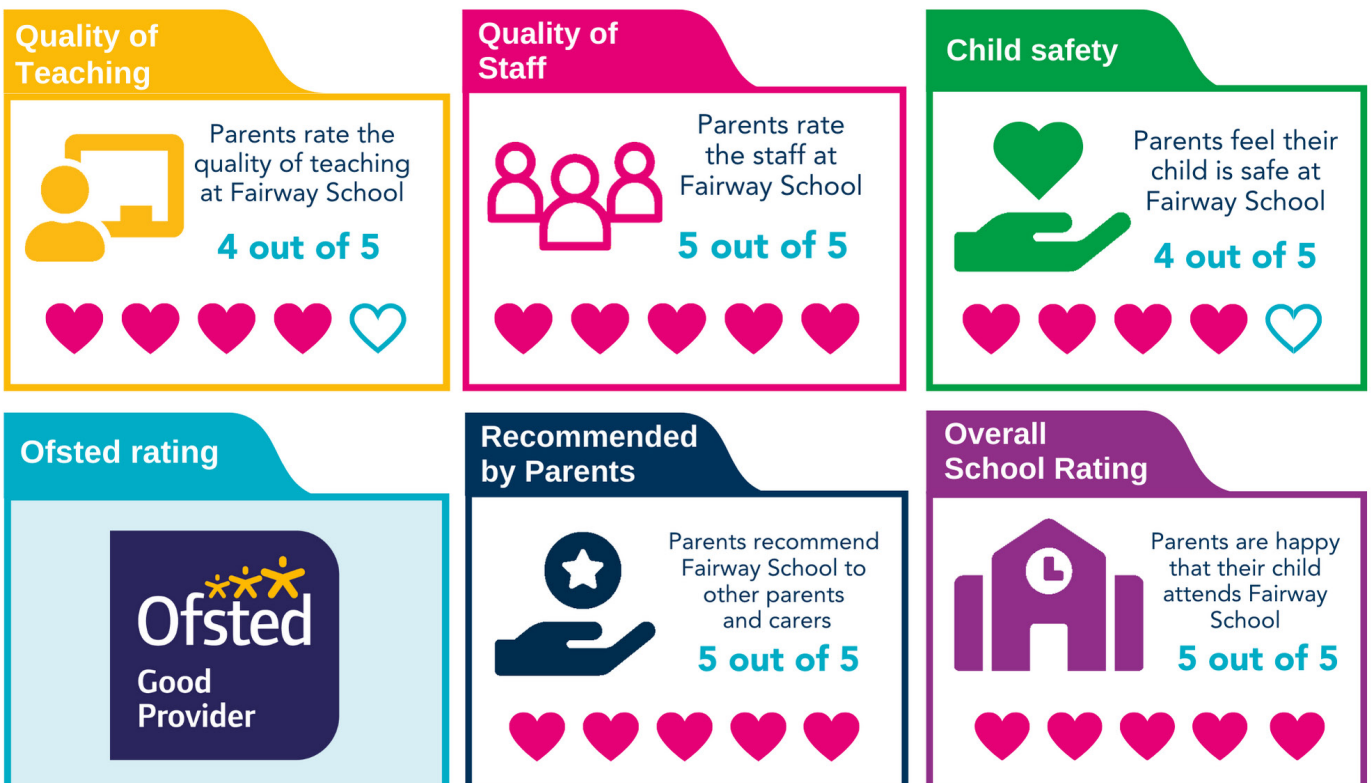
Supporting families

'Driving Futures Together' is reflected in everything we do, and establishing good partnerships with parents/carers is key to our work. We actively seek and listen to feedback from students, families and staff, to find out what's working well, and what we can do better.

Our specialist team also works in partnership with families to develop strategies to support behaviour and anxiety at home.

Our Outcomes

Parental feedback



What you need to know

Meals

School meals are provided and we offer a balance of healthy meals. Special dietary requirements are catered for - due to allergies, intolerance, religious and other beliefs.

Uniform

Information on our uniform is sent out to parents in the admissions pack once your place is confirmed.

Term dates

Our term dates are sent to parents and carers annually. They are also available to view and download on our website.

Our commitment to you

Quality statement

At Aurora Fairway we strive to provide the highest quality service to young people, parents/carers and local authorities. We believe that all these groups have the right to comment on the service we provide and to understand the complaints procedure.

If you do have a concern or complaint, we do want to hear about it as soon as possible. Please ask the school office for a copy of our complaints procedure if you would like to know more. We like to know when we are getting things right too, so please feel free to also send us any compliments – our staff are always happy to hear them!

Safeguarding statement

Aurora Fairway is wholly committed to safeguarding and promoting the wellbeing of our students, and we expect all staff and visitors to share this commitment. Safer recruitment practices are followed and all staff have an Enhanced DBS check.

Contact Us

For more information please contact us at:

Headteacher: Julie Sadler

Aurora Fairway School

High Leys

St Ives, Cambridgeshire

PE27 6AL

07464 496848

Jackie.McFall@the-aurora-group.com

Julie.Sadler@the-aurora-group.com

www.theauroragroup.co.uk/fairway



SEMH, ADHD, ASC



11-16



Mixed



38 Week Day

Caring

Ambitious

Collaborative

Trusted

Innovative



www.theauroragroup.co.uk



020 3617 0170



info@the-aurora-group.com



AuroraGroupUK



The_AuroraGroup



The Aurora-Group



the_auroragroup