



# Aurora Severnside School



**A specialist independent day school, offering academic and therapeutic provision for students aged 11-16 with social, emotional and mental health needs, Autism and additional learning needs.**

**Caring**

**Ambitious**

**Collaborative**

**Trusted**

**Innovative**

# At The Aurora Group

We believe in giving people the opportunities they need to create and lead fulfilling, independent lives.

Established in 2015, we are now the UK's sixth largest provider of education, care and support services for children and young people with special educational needs and disabilities. Each of our schools, colleges and residential homes retains its own unique identity while embracing and embodying our group's core values.



**We are caring.** We understand that your experience in mainstream care and education may have been a difficult one. We take seriously our responsibility for the children and young people in our care, and are committed to making your time with us as positive and fulfilling as possible.



**We are ambitious.** We have high expectations of all our children and young people, regardless of what barriers they may have faced in the past. We encourage them to expect more for themselves, while challenging employers and communities to understand and value their diverse needs and attributes.



**We are collaborative.** Everything we do, we do in partnership with you. We actively seek and listen to feedback from students, parents and staff, to find out what's working well, what we can do better, and how we can further develop all our services to benefit the people we work with.



**We are trusted.** Our business is funded by ethical investors. They understand that sustainable growth is possible only when we hold ourselves to the highest standards, by delivering consistently top-quality services to every single person we work with.



**We are innovative.** We begin planning for each young person's future the minute they walk through our doors. We tailor our approach to their unique needs, and are constantly looking for new opportunities to help them explore, enhance and employ their own skills, talents and abilities.



# Welcome

At Aurora Severnside School, we combine the best elements of a mainstream school with the additional support and resources of a special school, to create an environment where every young person can achieve their own goals and thrive in a future of their own choosing.

We aim to prepare students for life beyond school, so further education and employability is truly at the heart of our culture and ethos. We are on the thriving Gloucestershire Science and Technology Park with potential progression routes to work experience and employment opportunities right on our doorstep.

Our highly skilled and specialist teaching, support and therapeutic teams work with each young person to ensure their needs are fully met and that every achievement takes them closer to their potential in all aspects of their lives; educationally, socially and emotionally.

We look forward to welcoming you to Aurora Severnside School, where we will work together to create the future that you want for your family.

*Rachel Lynch*

Headteacher, Aurora Severnside School







# About our school

Aurora Severnside School is a specialist independent day school based in Gloucestershire Science and Technology Park, near Berkeley, Gloucestershire. We combine the best elements of a mainstream education with the unique specialist and therapeutic input for students aged 11-16 with social, emotional and mental health needs, including those who face communication and behavioural challenges associated with Autism Spectrum Conditions.

Our vision at Aurora Severnside School is to create an inclusive, welcoming learning environment in which all our students can develop and thrive. We put our students' needs first, because we know that once we understand who they are and their individual learning styles, we can support them to achieve their full potential.



## Our facilities

The school has been designed specifically to support young people who struggle in larger mainstream environments. As a school we are extremely fortunate to have the specialist teaching staff, resources and facilities to offer a truly exceptional experience for our students.

Our on-site facilities include:

- Fully equipped Science Laboratory
- ICT and Digital Media Suite
- Catering Classroom
- Break out spaces for 1:1 or small group therapeutic work
- Multi-use Games Area
- Polytunnel
- Forest School





## Our curriculum

Our students enjoy a broad based curriculum of core studies in Maths, English and Science alongside practical and creative subjects, with a strong focus on developing their employability skills, so students can unlock future career paths. Their academic learning is complemented with the development of 'soft' skills, such as teamwork, communication and resilience, helping them to become independent adults who are able to look after their emotional and physical wellbeing.

Throughout their time with us, students can achieve a range of qualifications, GCSEs or equivalent vocational certificates, and benefit from a range of high-quality opportunities to work with local employers and participate in industry related activities.

We help each student to identify and develop their unique skills, talents and abilities, so that they can choose a post-16 route that works for them – whether that's further education, vocational training or employment.

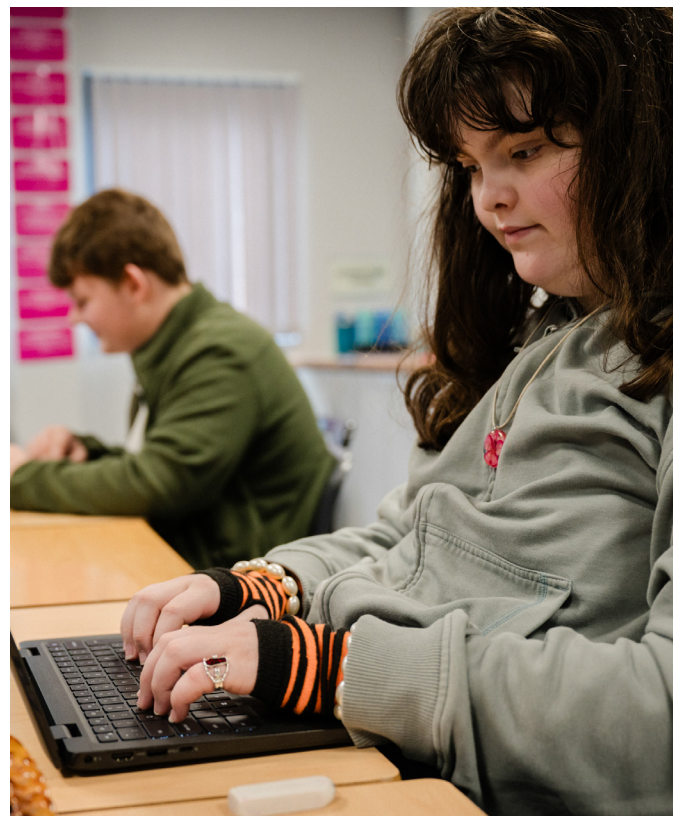
### The Aurora Curriculum Framework

Aurora values drive everything we do and give us a framework which informs our curriculum (what we teach our children and young people) and provide us with an overarching intent and aim. This helps us understand the impact our teaching has by providing clear and aspirational targets.

The Aurora Curriculum Framework unites us all whilst providing freedom to develop bespoke, ambitious and tailored curriculum models and learning pathways for our students.

We recognise that:

- All students should have access to a broad and balanced curriculum which engages and challenges them.
- All students need to work at a level which is appropriate to their understanding, relevant to their chronological age and at a rate that suits their individual abilities.
- Teaching is approached with the focus on the individual needs of the student.
- Each student should have a tailored curriculum based upon their baseline assessment, previous academic outcomes, long-term learning targets and life aspirations.



# The Aurora Curriculum Framework

## Our Intention

Provide personalised support and a nurturing approach to enable our students to become compassionate, independent learners.

## Aurora Values

### Caring



Children and young people are well prepared for the demands of ever-changing life in 21st century Britain and become active participants in their communities.

Give our learners the drive and ambition to succeed and become the best version of themselves in their education, their employment, their mental health and their independence in adulthood.

### Ambitious



Learners make outstanding progress and achieve the qualifications, skills and outcomes which will enable them to thrive in the next stage of their lives.

Develop every young person's social and emotional growth, and life skills.

### Collaborative



Learners are able to communicate confidently and engage successfully with others and the wider world.

Create environments where children and young people are safe to develop as individuals, where they can learn from mistakes, overcome their barriers to learning and develop resilience.

### Trusted



Children and young people know how to take appropriate risks, keep themselves safe (physically and virtually), and are able to secure the support they require to become independent adults.

Create centres of excellence, providing an outstanding, personalised education for all learners.

### Innovative



Children and young people experience a rich variety of unique opportunities which support individual development and success.



“ We aim to support students to achieve personally and academically, whilst gaining practical skills for their future. ”





## Your experience with us

We believe that one size does not fit all – our approach to learning and teaching is to focus on the individual needs of each student.

Each student has a tailored curriculum based upon their initial assessment, previous academic outcomes and long-term learning targets – the curriculum fits around the young person, not the other way around!

Students are taught in classes of less than 8, with a standard staff ratio of 1:3, which can be higher if required, enabling close staff supervision throughout the school day. When appropriate, students can also be taught in 1:1 situations, as well as within our community.

We provide planned activity choices during social times, including sport clubs, indoor board games and a Quiet Zone, to sustain structure throughout the day.



## Building trust

We take a positive approach to behaviour support at Aurora Severnside School. We believe that managing behaviour is first and foremost about relationships and trust.

We use PACE and Restorative approaches to support our students to grow and develop socially and emotionally. We support our students to develop the skills needed to manage conflict and challenges in order to support them to grow into healthy, happy and productive members of society.

## Supporting families

Everything we do, we do in partnership with parents/carers. We actively seek and listen to feedback from students, families and staff, to find out what's working well, and what we can do better.

Our specialist team works in partnership with families to develop strategies to support behaviour and anxiety at home.



## Integrated therapy

We offer a range of clinical and therapeutic interventions at Aurora Severnside School, designed to help our students overcome barriers to participation in education.

These are delivered by highly skilled staff in a class setting, using an integrated therapeutic model. This enables us to offer flexible and responsive support whenever and wherever it is needed most, and our staff team follows a single, student-centred plan.

We monitor and adapt our approach for each student through a personalised Annual Review process, which puts the student at the centre and involves a range of academic and therapeutic staff.

## Parental feedback

### Child Safety



Parents feel their child is safe at Severnside School

**5 out of 5**



### Quality of Staff



Parents rate the staff at Severnside School

**4.7 out of 5**



### Recommended by Parents



Parents recommend Severnside School to other parents and carers

**4.3 out of 5**



### Overall School Rating



Parents are happy that their child attends Severnside School

**4.7 out of 5**





# Our commitment to you

## Quality statement

At Aurora Severnside School we strive to provide the highest quality service to young people, parents/ carers and local authorities. We believe that all these groups have the right to comment on the service we provide and to understand the complaints procedure.

If you do have a concern or complaint, we do want to hear about it as soon as possible. Please ask the School office for a copy of our complaints procedure if you would like to know more. We like to know when we are getting things right too, so please feel free to also send us any compliments – our staff are always happy to hear them!

## Safeguarding statement

Aurora Severnside School is wholly committed to safeguarding and promoting the wellbeing of our students, and we expect all staff and visitors to share this commitment. Safer recruitment practices are followed and all staff have an Enhanced DBS check.







# What you need to know



## Uniform

At Aurora Severnside School we do not have a school uniform. We know that many of our students struggle with the feel and texture of clothes, so we prefer them to wear whatever makes them feel comfortable in school.

## Term dates

Our term dates are sent to parents and carers annually. They are also available to view and download on our website.

## School meals

School meals are provided and we can offer a choice of where students eat depending on their needs, this could be with others or 1:1. Special dietary requirements are catered for (due to allergies, intolerance, religious and other beliefs).

## Contact Us

**Headteacher:** Rachel Lynch

### Aurora Severnside School

A21, Gloucester Science and Technology Park  
Berkeley  
Gloucestershire  
GL13 9FB

**01452 671717**

[aurora.severnside@the-aurora-group.com](mailto:aurora.severnside@the-aurora-group.com)  
[referrals@the-aurora-group.com](mailto:referrals@the-aurora-group.com)  
[www.theauroragroup.co.uk/severnside](http://www.theauroragroup.co.uk/severnside)



ADHD, ASC, ASD,  
SEMH



11-16



Mixed



38 Week Day



**Aurora  
Woodlands School**  
Lancashire

Caring

Ambitious

Collaborative

Trusted

Innovative

**Aurora** 



[www.theauroragroup.co.uk](http://www.theauroragroup.co.uk)



020 3617 0170



[info@the-aurora-group.com](mailto:info@the-aurora-group.com)



AuroraGroupUK



The\_AuroraGroup



The Aurora-Group



the\_auroragroup

Registered address:

Aurora Care & Education Opco Ltd, Unit 13, Twigworth Court Business Centre, Tewkesbury Rd, Gloucester GL2 9PG  
Company No. 9768784